

DETTAGLI

- 2 tasche - 2 tasche sul retro
- Elastico in vita tergisudore
- 1 bottone - Chiusura zip
- Passanti cintura
- Inserto in rete traspirante

TAGLIE

XS ÷ 4XL
Slim Fit

COLORE

J004 Jeans blu

TESSUTO

62% cotone
35% poliestere
3% elasthan
180 g / m²



Le misure indicate si riferiscono alle taglie **S** per i capi femminili, **L** per i capi maschili. Per i capi a taglia unica le misure indicate sono effettive.

Il pantalone Enoch è una capo di nuovo concetto. Elegante e dalla linea Slim Fit, presenta due tasche sui fianchi, una piccola tasca posteriore, un elastico da 4 cm ed una coulisse a cingere la vita. Enoch è realizzato in satin poliestere/cotone elasticizzato 180 g / m², nelle varianti nero e bianco, e resiste ai lavaggi ad alte temperature ed al candeggio.

COLORI DISPONIBILI



J004 Jeans blu

TABELLE TAGLIE
E CORRISPONDENZE

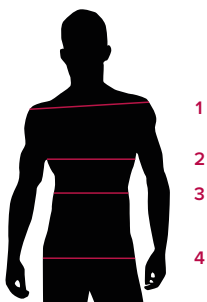
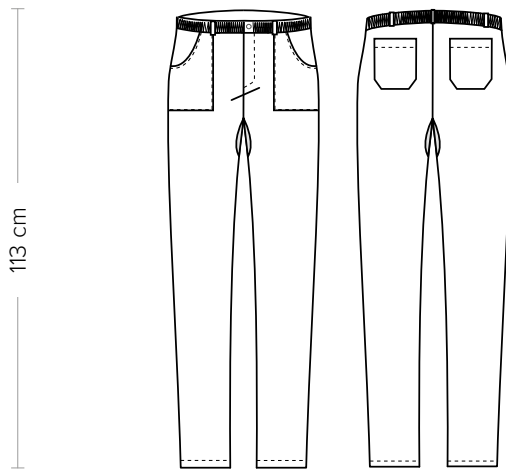


TABELLA ST-P4 SLIM FIT								
TAGLIA	XS	S	M	L	XL	XXL	XXXL	4XL
1 - SPALLE								
2 - CIRCONFERENZA TORACE								
3 - CIRCONFERENZA VITA	69-74	75-77	78-83	84-86	87-92	93-99	100-104	100-104
4 - CIRCONFERENZA BACINO	86-90	91-94	95-98	99-102	103-106	107-112	113-118	113-118

GUIDA ALLE TAGLIE **1)** Prendere le misure anatomiche (corpo con abbigliamento intimo) senza stringere mantenendo ben teso il metro. **Nota:** nel caso vogliate indossare dei camici già con dell'abbigliamento sotto prendete le misure già abbigliati. **2)** Nel caso tra le misure prese vi fosse una misura a cavallo fra 2 taglie vi consigliamo di prendere quella più grande. **3)** Le misure della tabella sono espresse in centimetri.



DETAILS

- 2 pockets - 2 rear pockets
- Elasticated sweatband
- 1 button - Zip fly
- Belt loops
- Network fabric panel

SIZES

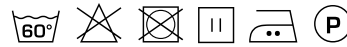
XS ÷ 4XL
Slim Fit

COLOURS

J004 Jeans blue

FABRIC

62% cotton
35% polyester
3% elastane
180 g / m²



The measures indicated refer to sizes **S** for women, **L** for men. For one-size-fits-all garments, the measurements indicated are effective.

The Enoch trousers are a new concept garment. Elegant and with a Slim Fit line, it has two pockets on the sides, a small pocket back, a 4 cm elastic and a drawstring to surround the waist. Enoch is made of 180 g / m² stretch polyester / cotton satin, in the black and white variants, and resists washing at high temperatures and bleaching.

AVAILABLE COLOURS



J004 Jeans blue

SIZE TABLES
AND CORRESPONDENCES

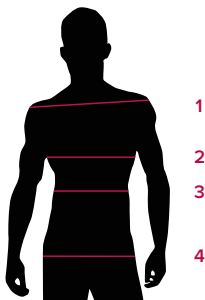


TABLE ST-P4 SLIM FIT								
SIZE	XS	S	M	L	XL	XXL	XXXL	4XL
1 - SHOULDERS								
2 - CHEST CIRCUMFERENCE								
3 - WAIST CIRCUMFERENCE	69-74	75-77	78-83	84-86	87-92	93-99	100-104	100-104
4 - HIPS CIRCUMFERENCE	86-90	91-94	95-98	99-102	103-106	107-112	113-118	113-118

SIZE GUIDE **1)** Take the anatomical measurements (body with underwear) without tightening, keeping the measuring tape taut. Note: in case you want to wear of the gowns already with the clothing underneath take the measurements already dressed. **2)** If there is a measure between 2 sizes between the measurements taken, we advise you to take the bigger one. **3)** The measurements in the table are expressed in centimeters.